

ELECTRIC FRICTION-CONE PENETROMETER

Probe I.D

CLIENT:

Job No.:

PROJECT:

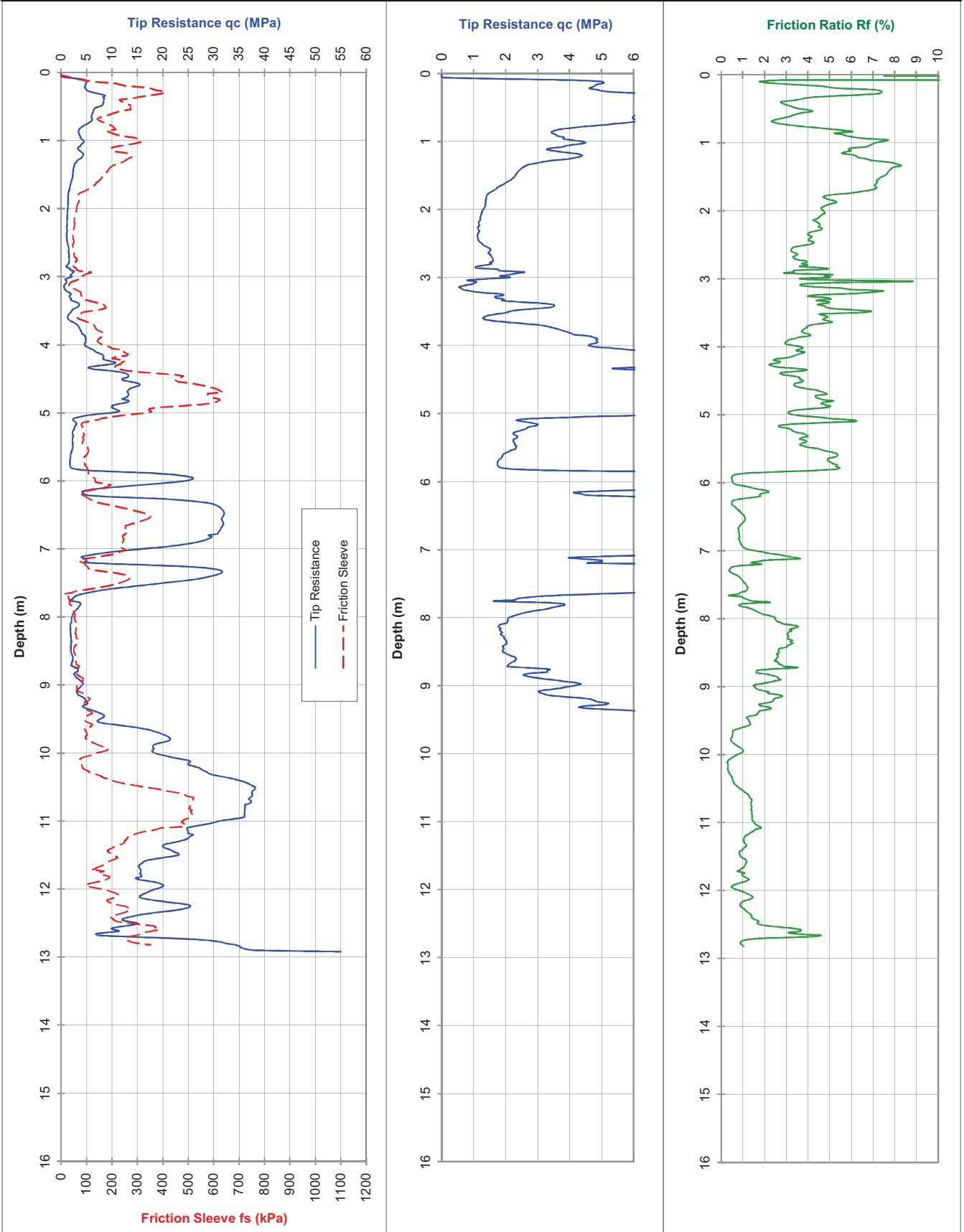
RL (m):

CPTU 3759A-2

LOCATION:

Co-ords:

08-Sep-15



Tested in accordance with AS 1289.6.5.1-1999 and IRTF 2001 for friction reducer

Water (m): 1.7

Dummy probe to (m):

Refusal: 55MPa

Cone I.D.: EC06

File:

Rig Type: 11 tonne tracked (M2)